

## ESC-2/ESC-2+ Ethernet to Serial Adapter Set Up and Programming

### NOTE:

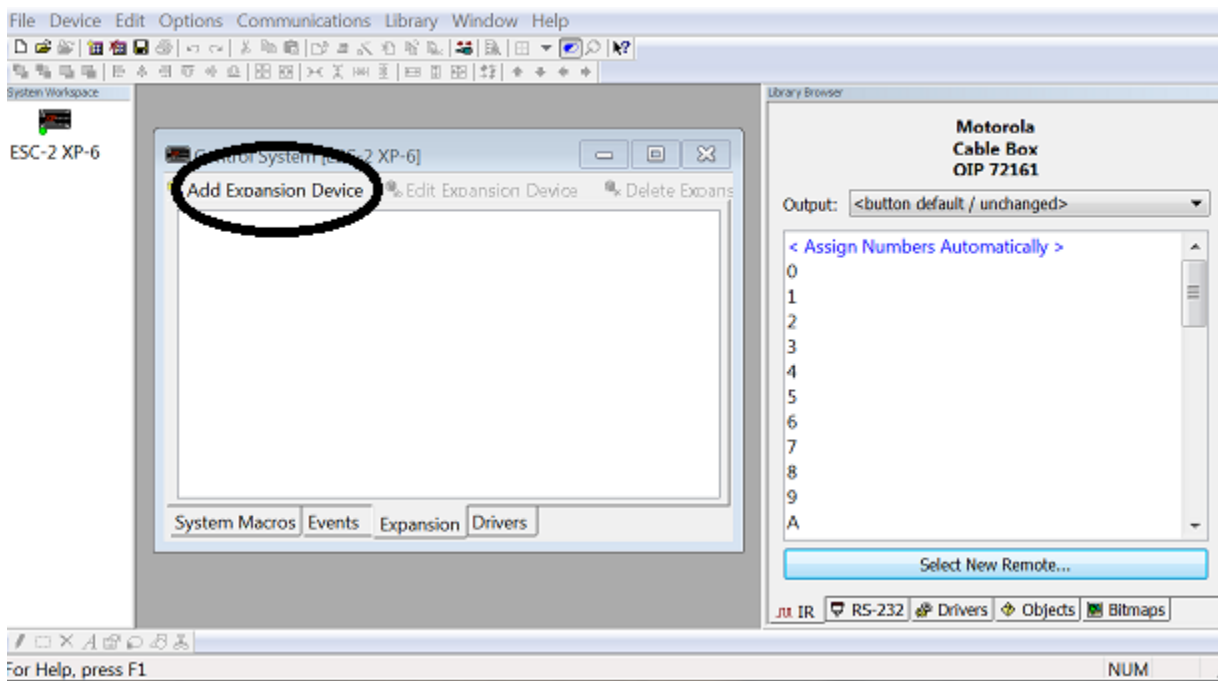
- \*Update your Integration Designer software to the latest version.
- \*Verify you have the latest firmware on your XP processor.

**Step 1:** Add the ESC-2 as an expansion device in your programming file.

- Select the XP Series Processor
- Click on the Expansion tab
- Click on “Add Expansion Device”
- Select the ESC-2 from the expansion device window.

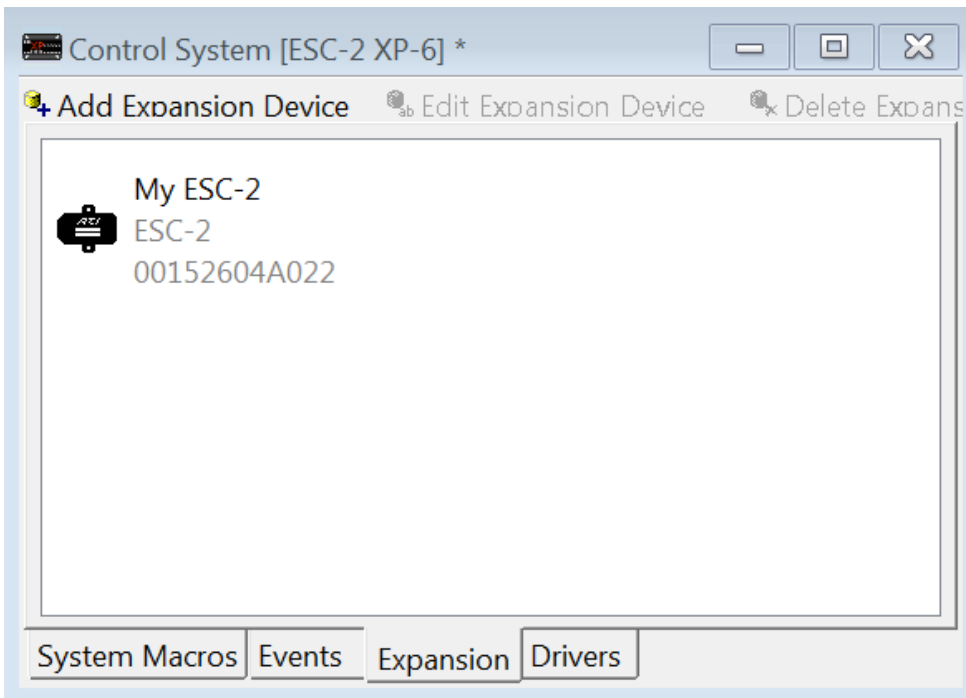
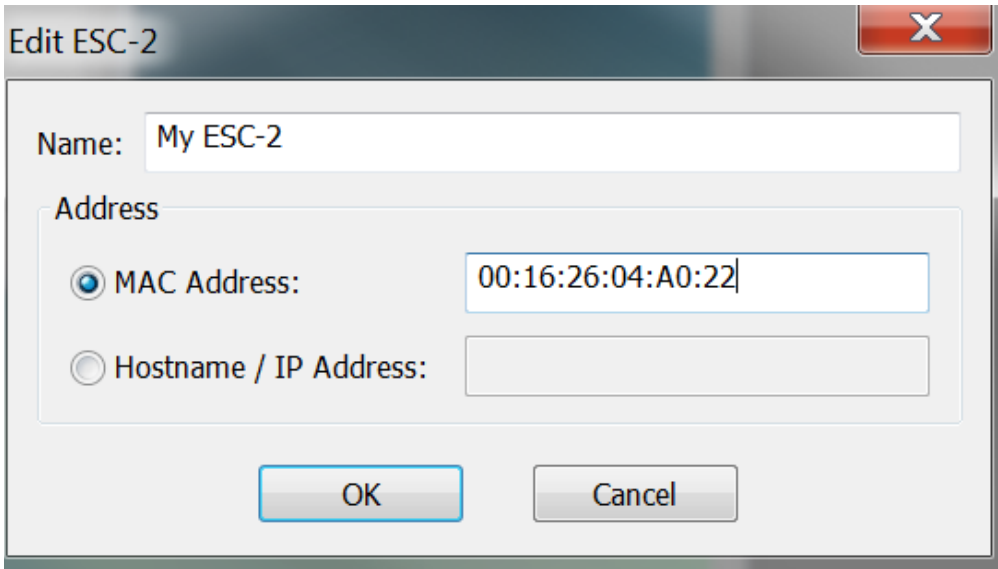
### PLEASE NOTE:

*When adding the ESC-2/ESC-2+ as an expansion device in the Integration Designer software, there is only one selection for the ESC-2/ESC-2+ expansion device labeled ESC-2. This will work for both the ESC-2 and ESC-2+ models.*



**Step 2: Add the MAC address or Hostname / IP address.**

- The MAC address is printed on the ESC-2/ESC-2+.
- See the next page for assigning the ESC-2/ESC-2+ network connections.

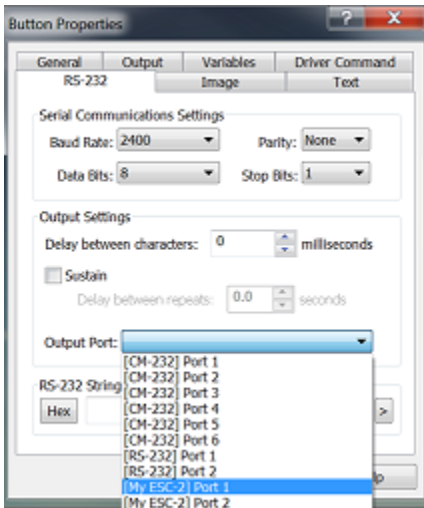


^This is how it will appear in the Expansion Tab of the XP processor

### Step 3: Programming commands using the ESC-2/ESC-2+

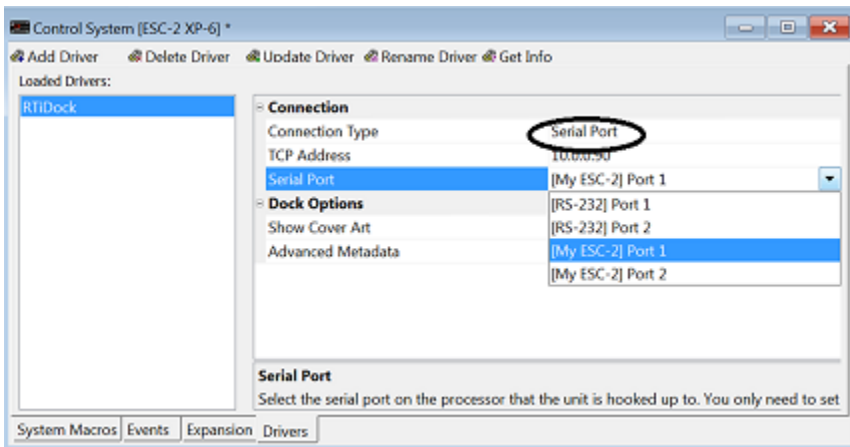
#### For RS-232 one way strings.

- Right click on the button with you serial command.
- Select Edit Properties
- Select the RS-232 tab
- Click on the Output Settings drop down arrow and select the correct port of the ESC-2/ESC-2+.



#### For Driver Commands:

- Select your driver in the Driver tab of the XP Processor
- Make sure the connection type is set to Serial
- Change the Serial Port to the correct ESC-2/ESC-2+ serial port.



## Step 4: Adjust Ethernet Settings of ESC-2/ESC-2+ if necessary

### Find the ESC-2/ESC-2+ device on the local area network and open the Web Interface

**NOTE:** This process may vary depending on your version of Microsoft Windows®

- Press the Start button on the Windows task bar
- Click on the "Control Panel" option listed in the Start Menu
- Click on Network and Internet
- Click on Network and Sharing Center
- Click on the Domain Network
- Scroll down to Other Devices
- Double click the ESC-2/ESC-2+ in the network list to open web interface
- Select Network Settings



RTI ESC-2+

Home  
**Network Settings**

### Status & Configuration

Name	RTI ESC-2+	
Firmware Revision	1.00.11	
IP Address	10.0.0.202	
MAC Address	00-15-26-04-B2-D3	

Current port settings:

	Port 1	Port 2
Baud Rate	115200 bits/second	115200 bits/second
Data Size	8 bits/character	8 bits/character
Parity	None	None
Stop Bits	1 bit(s)	1 bit(s)
Flow Control	None	None
Local Telnet Port Number	23	26

### ^ESC-2+ Web Configuration Interface

Also, while it isn't necessary or recommended, you can change the address type from DHCP to static as shown by hitting the drop down arrow. Once static is selected you can input the static connection settings. After making the changes, select "Update Settings".

**PLEASE NOTE:** If the incorrect IP address settings are entered, the ESC-2/ESC-2+ may not connect to the network and changes to the ESC-2/ESC-2+ will not be possible, rendering it inoperable. In this case, follow instructions below to reset the ESC-2/ESC-2+ back to factory default using the "RESET" button.



RTI ESC-2+

Home  
Network Settings

### Network Settings

Name	RTI ESC-2+	
Firmware Revision	1.00.11	
IP Address	10.0.0.202	
MAC Address	00-15-26-04-B2-D3	

IP Address Selection

Address Type	DHCP/AutoIP ▼		
Static IP Address	0	0	0
Subnet Mask	255	255	255
Default Gateway	0	0	0

Update Settings

### **RESET ESC-2+ TO FACTORY DEFAULTS (Applies to ESC-2+ only)**

If the ESC-2+ is not functioning or is not accessible via the Ethernet network (LAN), it may be necessary to “Reset” the unit to factory defaults. This process will clear all of the settings that have been adjusted and set the unit back to use DHCP.

- 1) Power the ESC-2+: Plug in the included power supply.
- 2) Press and hold the RESET button for 6 seconds: Reset button is located on the bottom side.
- 3) Re-install the ESC-2+:

### **MORE INFORMATION:**

For more information regarding the ESC-2/ESC-2+ including specifications and other documentation, visit the product support section of the RTI dealer website.