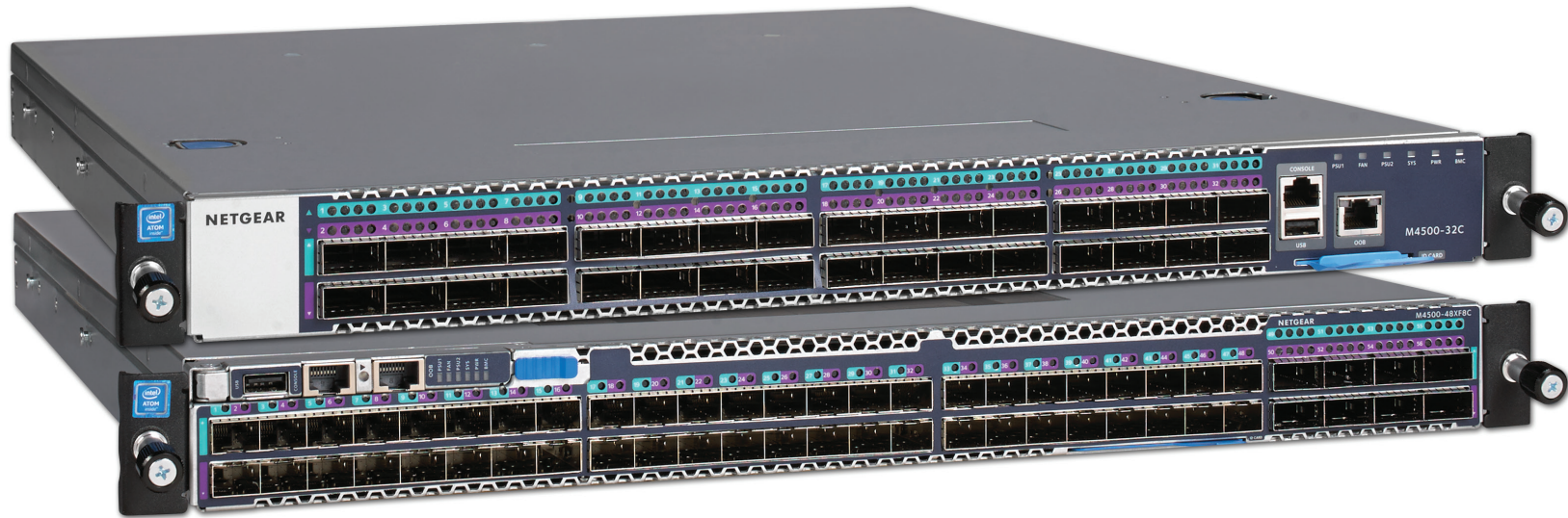


M4500 Series: AVoIP Aggregation

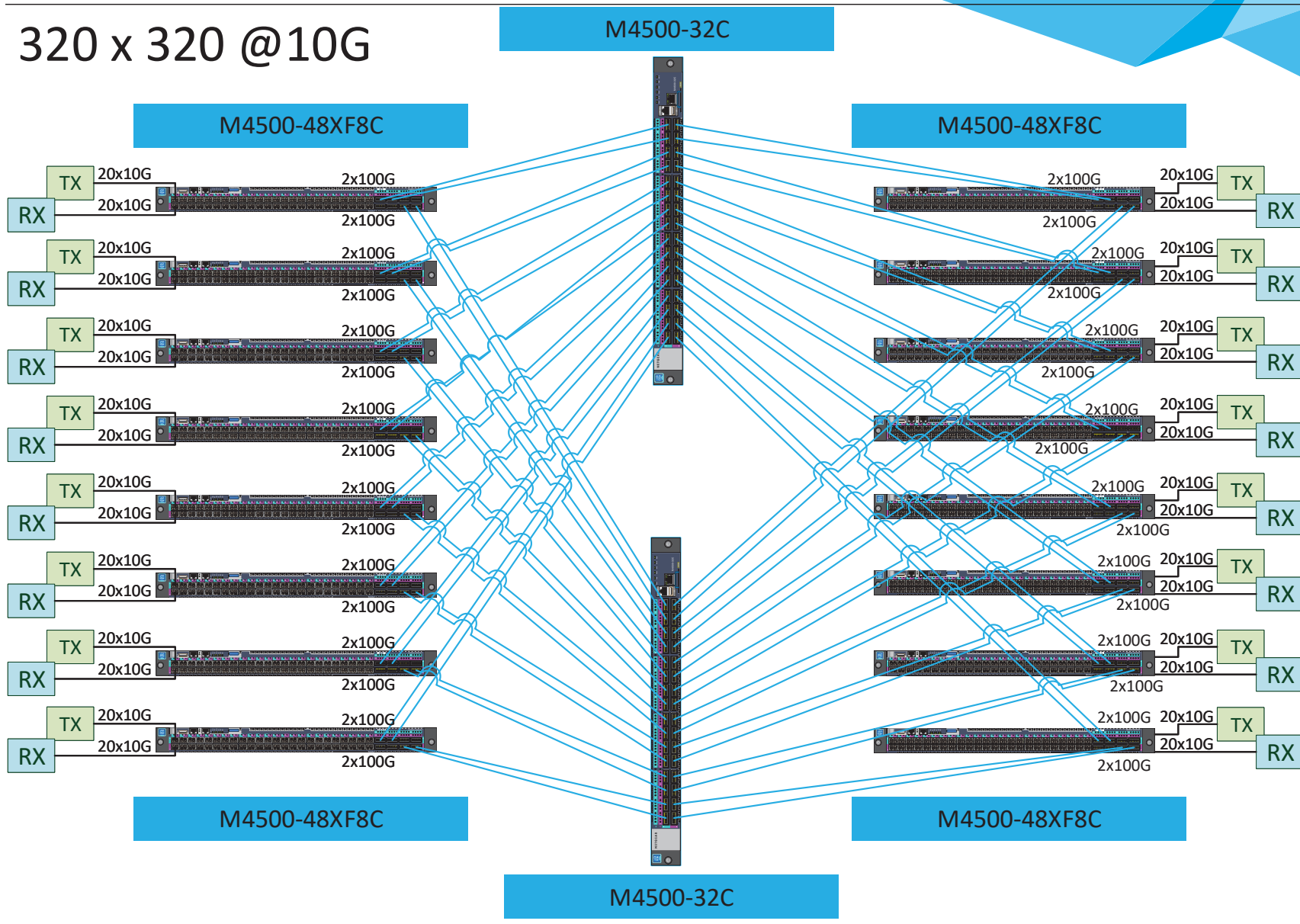


M4500 series

SDVoE-ready 100G and 10G Ethernet switches combining the configurability of a matrix switch with the power and scalability of Ethernet to support hundreds of AV over IP endpoints.



320 x 320 @10G



For AV over IP installations

- Installers opting to use M4500-48XF8C switch in their installation will find that it is already preconfigured out of the box. Experience true AV and multicast Zero Touch network configuration. Connect AV over IP encoders and decoders, and power on the switch. It just works! Then use the M4500-32C switch to aggregate the edge switches for a complete set up in large projects up to 320x320 SDVoE (10Gb) devices in a single architecture.

Intelligent IGMP Plus

- IGMP Plus multicast allows for scalable ProAV installations at Layer 2 without the PIM (Protocol Independent Multicast) complexity. IGMP Plus is default on VLAN 1 out of the box and can be configured on another VLAN for automatic IGMP across M4500 and M4300 switches on that VLAN.

M4500 Series Features

Introducing two new, preconfigured M4500 100GE switches: M4500-32C and M4500-48XF8C. The trend of moving matrix switching into the Ethernet network is accelerating and a new class of switches has come to market. Combining the configurability of a matrix switch with the power and scalability of Ethernet, they support hundreds of AV over IP endpoints, at a price point dramatically lower than comparable matrix switches. The Layer 3 feature set includes static and dynamic routing with VRRP, OSPF, BGP, VRF-Lite and PIM. Removing the need for PIM routing, these new switches offer IGMP Plus and greatly simplify system architectures with the same well-known IGMP techniques across the entire AV over IP network while still operating at Layer 2. Installers opting to use M4500-48XF8C switch in their installation will find that it is already preconfigured out of the box. It comes with 48 10G Fiber ports with 8 100G uplink ports with true AV and multicast Zero Touch network configuration. Connect AV over IP encoders and decoders, and power on the switch. It just works! Then use the M4500-32C switch to aggregate the edge switches for a complete set up in large projects up to 320x320 SDVoE (10Gb) devices in a single architecture.

Key features

- Cost effective 100G aggregation and 10G access layer for AV deployments and redundant spine & leaf topologies
- Zero Touch AV-over-IP with pre-configured L2 Multicast on all models (10G AV encoders and decoders) and SDVoE-ready
- Advanced Layer 3 feature set including IP Multinetting/CIDR, Static, PBR, VRRPv2, OSPFv3, PIM-SM, VxLAN, BGP4, VRF-Lite
- Optimized for “Spine and Leaf” redundant AV installations, with or without MLAG between spine switches
- Up to 320 TX / 320 RX (10 Gigabit) Nodes all line rate with each other in a redundant spine and leaf architecture
- 2 power supply units (APS750W) and 6 redundant fan trays (AFT402) pre-installed for 1+1 power and 4+2 fan redundancy
- Ultra-low latency (spine 0.13µs @100G; leaf 0.119µs @10G) and scalable table size (32K MAC, 8K ARP, 4K VLANs, 32K routes)

Software

- Advanced classifier-based, time-based hardware implementation for L2 (MAC), L3 (IP) and L4 (UDP/TCP) security and prioritization
- Selectable Port-Channel / LAG (802.3ad - 802.1AX) L2/L3/L4 hashing for fault tolerance and load sharing with any Ethernet channeling
- Up to 64 Link Aggregation Groups (LAG, Port-Channel, LACP) with 32 ports per LAG and Multi-chassis Link Aggregation (MLAG)
- Comprehensive IPv4/IPv6 static and dynamic routing including IP Multinetting/CIDR, PBR, VRRPv2, OSPFv3, PIM-SM6, BGP4, VRF-Lite
- Enhanced IPv4/IPv6 multicast forwarding with IGMPv3/MLDv2 and IGMP Plus enhancement at the VLAN level
- IGMP Plus enhanced implementation for automatic multicast across a L2 network (igmp-plus <vlan-id> easy macro-command)
- High performance IPv4/IPv6 multicast routing with PIM-SM and PIM-SM6 associated with unicast static routes, or other L3 protocol
- Advanced IPv4/IPv6 security including malicious code detection, DHCP Snooping, IP Source Guard, and Control Plane Policing (CoPP)
- Priority-Based Flow Control (PFC), DCBX Bridging, Enhanced Transmission Selection (ETS) and VXLAN Gateway for server installations

Availability

- Two (2) redundant, modular power supplies are pre-installed contributing to business continuity management
- Six (6) hot-swappable fan trays are pre-installed for 4+2 fan redundancy
- Spine and leaf architecture with every leaf switch (10G/25G access) connecting to every spine switch (distributed 100G core)
- Up to 48 paths ECMP routing for load balancing and redundancy
- Link Dependency feature enables or disables ports based on the link state of different ports

Management

- Industry standard SNMP, RMON, MIB, LLDP, AAA, sFlow and RSPAN remote mirroring implementation
- Service port for out-of-band 1 Gigabit Ethernet management (OOB)
- Standard RS232 straight-through RJ45 for local management console (USB 2.0 to RS232 converter with PL203 chipset is advised)
- Non-Disruptive Configuration for applying a new configuration file without disrupting the operation of unchanged features
- Industry standard command line interface (CLI) only

NETGEAR warranty

- M4500 series is backed by a NETGEAR ProSAFE® Limited Lifetime Hardware Warranty*
- Lifetime Next Business Day Hardware Replacement
- ProSUPPORT 24x7 Advanced Technical Support via phone for 90 days (Remote diagnostics performed by our technical experts for prompt resolution of technical issues. ProSUPPORT coverage can be extended by purchasing one, three, or five year contracts)
- ProSUPPORT Lifetime 24x7 Advanced Technical Support via chat.



Hardware at a Glance

Model name	Form-Factor	Switching Fabric	FRONT		REAR		MANAGEMENT	Model number
			25GBASE-X SFP28 ports	100GBASE-X QSFP28 ports	PSU	Fans	Out-of-band Console	
M4500-32C	Full width 1-unit 1U rack mount	6.4 Tbps		32 ports 1x100G; 1x50G; 1x40G; 4x25G; 4x10G 1x100G default mode	Modular 2 bays 2 PSU included (1+1 redundancy): 2 x APS750W	Modular 6 slots 6 Fans included (4+2 redundancy): 6 x ATF402 Front-to-back 64.0dB	Ethernet: Out-of-band 1G port (Front) Console: RJ45 RS232 (Front) Storage: USB (Front)	CSM4532
M4500-48XF8C	Full width 1-unit 1U rack mount	4 Tbps	48 ports 1x25G; 1x10G; 1x1G 1x10G default mode	8 ports 1x100G; 1x100G; 1x50G; 1x40G; 4x25G; 4x10G 1x100G default mode	Modular 2 bays 2 PSU included (1+1 redundancy): 2 x APS750W	Modular 6 slots 6 Fans included (4+2 redundancy): 6 x ATF402 Front-to-back 68.0dB	Ethernet: Out-of-band 1G port (Front) Console: RJ45 RS232 (Front) Storage: USB (Front)	XSM4556

Front View

M4500-32C



M4500-48XF8C



Rear View

M4500-32C



M4500-48XF8C



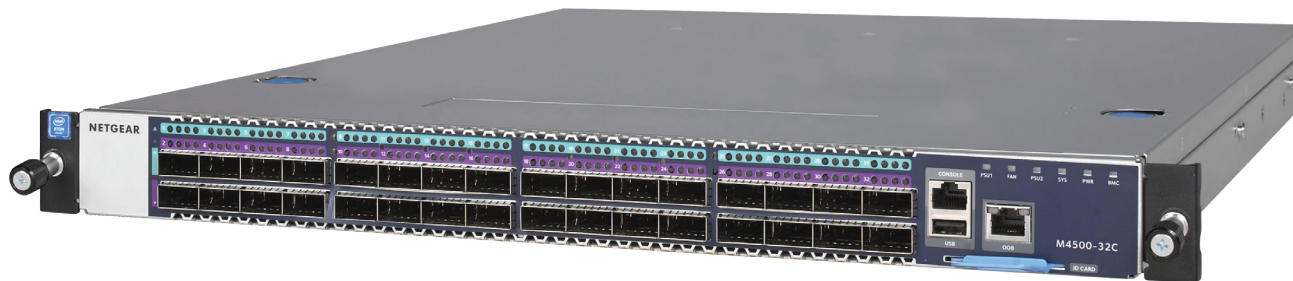
Components and Modules

M4500-32C 100GE Managed Switch

Ordering information

- Americas, Europe: CSM4532-100NAS
- Europe: CSM4532-100EUS
- Asia Pacific: CSM4532-100AJS
- China: CSM4532-100PRS
- Warranty: Lifetime ProSAFE Hardware Warranty

- The M4500-32C provides 32-port QSFP28 (100G, 50G and 40G)
- QSFP28 ports are preconfigured for 100G
- 6.4Tbps non-blocking fabric for 32 x 100G bi-directional
- Two modular power supplies APS750W are pre-installed for 1+1 redundancy
- Six modular fan trays AFT402 are pre-installed for 4+2 redundancy
- Two mounting ears and screws for rack mounting (front)
- One set of rail kits for rack mounting (back)
- Out-of-band 1G Ethernet Management port
- RJ45 RS232 console port and USB storage port
- L2/L3/L4 rich services for AV over IP (certified SDVoE-ready)
- Enhanced IGMP Plus for plug & play L2 Multicast between M4300/M4500 switches
- Line-rate spine and leaf with M4500-48XF8C (48-port SFP28 and 8-port QSFP28)
- Static and dynamic routing with VRRP, OSPF, BGP, VRF-Lite and PIM-SM/SSM
- 64dB @25 °C / 77 °F



Components and Modules

M4500-48XF8C 25/100GE Managed Switch

Ordering information

- Americas, Europe: XSM4556-100NAS
- Europe: XSM4556-100EUS
- Asia Pacific: XSM4556-100AJS
- China: XSM4556-100PRS
- Warranty: Lifetime ProSAFE Hardware Warranty

- The M4500-48XF8C switch provides 48-port SFP28 (25G, 10G and 1G fiber)
- And it also provides 8-port QSFP28 (100G, 50G and 40G fiber)
- SFP28 ports are preconfigured for 10G, QSFP28 ports for 100G
- 4Tbps non-blocking fabric for 48 x 25G and 8 x 100G bi-directional
- Two modular power supplies APS750W are pre-installed for 1+1 redundancy
- Six modular fan trays AFT402 are pre-installed for 4+2 redundancy
- Two mounting ears and screws for rack mounting (front)
- One set of rail kits for rack mounting (back)
- Out-of-band 1 G Ethernet Management port
- RJ45 RS232 console port and USB storage port
- L2/L3/L4 rich services for AV over IP (certified SDVoE-ready)
- Enhanced IGMP Plus for plug & play L2 Multicast between M4300/M4500 switches
- Line-rate spine and leaf with M4500-32C (32-port QSFP28)
- Static and dynamic routing with VRRP, OSPF, BGP, VRF-Lite and PIM-SM/SSM
- 68dB @25 °C / 77 °F



Accessories

APS750W Power Supply Unit

Ordering information

- Worldwide: APS750W-10000S
- Without power cord
- Warranty: 5 years



- Modular PSU for M4500-32C and M4500-48XF8C
- C14 connector
- Spare unit (M4500 switches ship with two PSUs already)
- Capacity:
 - Up to 750W output power at 110V-240V AC

AFT402 Fan Tray

Ordering information

- Worldwide: AFT402-10000S
- Warranty: 5 years



- Modular fan tray for M4500-32C and M4500-48XF8C
- Front-to-back
- Spare unit (M4500 switches ship with six fans already)

GBIC QSFP28, QSFP+, SFP+ and SFP Optics for M4500 series

AGM734 1000BASE-T RJ45 SFP (Gigabit)

Ordering information

- Worldwide: AGM734-10000S
- Warranty: 5 years



- Fits into M4500 models SFP28 interfaces
- 1 port Gigabit RJ45
- Supports only 1000Mbps full-duplex mode
- Up to 100m (328 ft) with Cat5 RJ45 or better
- Conveniently adds 1G copper connectivity to M4500 fiber interfaces

AXM765 10GBASE-T RJ45 SFP+ (10 Gigabit)

Ordering information





- Worldwide: AXM765-10000S
- Warranty: 5 years



- Fits into M4500 models SFP28 interfaces
- 1 port 10GBASE-T RJ45
- Copper connectivity up to 30 m (98 feet) distance
- CAT6a or better wiring required for 10GBASE-T up to 30 meters
- Conveniently adds 10G copper connectivity to M4500 fiber interfaces


Accessories

GBIC QSFP28, QSFP+, SFP+ and SFP Optics for M4500 series

Ordering information <ul style="list-style-type: none"> Worldwide: see table below Warranty: 5 years 	Multimode Fiber (MMF)		Single mode Fiber (SMF)
	OM1 or OM2 62.5/125µm	OM3 or OM4 50/125µm	9/125µm
<p>100 Gigabit QSFP28</p>  <ul style="list-style-type: none"> Fits into M4500 models QSFP28 interfaces 		<p>ACM761</p> <p>100GBASE-SR4 Duplex 4 MMF links - MTP/MPO connector up to 100m (328 ft)</p> <p>ACM761-10000S (1 unit)</p>	<p>ACM762</p> <p>100GBASE-LR4 long reach single mode LC duplex connector up to 10km (6.2 miles)</p> <p>ACM762-10000S (1 unit)</p>
<p>40 Gigabit QSFP+</p>  <ul style="list-style-type: none"> Fits into M4500 models QSFP28 interfaces 		<p>AXLM761</p> <p>40GBASE-SR4-BiDi Duplex 1 MMF link - LC duplex connector up to 100m (328 ft)</p> <p>AXLM761-10000S (1 unit)</p>	<p>AXLM762</p> <p>40GBASE-LR4 long reach single mode LC duplex connector up to 10km (6.2 miles)</p> <p>AXLM762-10000S (1 unit)</p>
<p>10 Gigabit SFP+</p>  <ul style="list-style-type: none"> Fits into M4500 models QSFP28 interfaces 	<p>AXM763</p> <p>10GBase-LRM long reach multimode 802.3aq - LC duplex connector up to 220m (722 ft)</p> <p>AXM763-10000S (1 unit)</p>	<p>AXM763</p> <p>10GBase-LRM long reach multimode 802.3aq - LC duplex connector up to 260m (853 ft)</p> <p>AXM763-10000S (1 unit)</p>	<p>AXM762</p> <p>10GBase-LR long reach single mode LC duplex connector up to 10km (6.2 miles)</p> <p>AXM762-10000S (1 unit) AXM762P10-10000S (pack of 10 units)</p>
		<p>AXM761</p> <p>10GBase-SR short reach multimode LC duplex connector OM3: up to 300m (984 ft) OM4: up to 550m (1,804 ft)</p> <p>AXM761-10000S (1 unit) AXM761P10-10000S (pack of 10 units)</p>	<p>AXM764</p> <p>10GBase-LR LITE single mode LC duplex connector up to 2km (1.2 mile)</p> <p>AXM764-10000S (1 unit)</p>
<p>Gigabit SFP</p>  <ul style="list-style-type: none"> Fits into M4500 models QSFP28 interfaces 	<p>AGM731F</p> <p>1000Base-SX short range multimode LC duplex connector up to 275m (902 ft)</p> <p>AGM731F (1 unit)</p>	<p>AGM731F</p> <p>1000Base-SX short range multimode LC duplex connector OM3: up to 550m (1,804 ft) OM4: up to 1,000m (3,280 ft)</p> <p>AGM731F (1 unit)</p>	<p>AGM732F</p> <p>1000Base-LX long range single mode LC duplex connector up to 10km (6.2 miles)</p> <p>AGM732F (1 unit)</p>

Accessories

Direct Attach Cables for M4500 series

ORDERING INFORMATION WORLDWIDE: SEE TABLE BELOW WARRANTY: 5 YEARS	QSFP28 to QSFP28			
	1 meter (3.3 ft)	3 meters (9.8 ft)		
100 Gigabit DAC • Fits into M4500 models QSFP28 interfaces	ACC761 100G QSFP28 Cu (passive) QSFP28 connectors ACC761-10000S (1 unit)	ACC763 100G QSFP28 Cu (passive) QSFP28 connectors ACC763-10000S (1 unit)		
	QSFP+ to QSFP+			
40 Gigabit DAC • Fits into M4500 models QSFP28 interfaces	AXLC761 40G QSFP+ Cu (passive) QSFP+ connectors AXLC761-10000S (1 unit)	AXLC763 40G QSFP+ Cu (passive) QSFP+ connectors AXLC763-10000S (1 unit)		
	SFP+ to SFP+			
10 Gigabit DAC 	1 meter (3.3 ft)	3 meters (9.8 ft)	5 meters (16.4 ft)	
	AXC761 10GSFP+ Cu (passive) SFP+ connectors AXC761-10000S (1 unit)	AXC763 10GSFP+ Cu (passive) SFP+ connectors AXC763-10000S (1 unit)	AXC765 10GSFP+ Cu (active) SFP+ connectors AXC765-10000S (1 unit)	
	7 meters (23.0 ft)	10 meters (32.8 ft)	15 meters (49.2 ft)	
	AXC767 10GSFP+ Cu (active) SFP+ connectors AXC767-10000S (1 unit)	AXC7610 10GSFP+ Cu (active) SFP+ connectors AXC7610-10000S (1 unit)	AXC7615 10GSFP+ (duplex fiber optic) SFP+ connectors AXC7615-10000S (1 unit)	
	20 meters (65.6 ft)			
AXC7620 10GSFP+ (duplex fiber optic) SFP+ connectors AXC7620-10000S (1 unit)				

• Fits into M4500 models QSFP28 interfaces

** This product comes with a limited warranty that is valid only if purchased from a NETGEAR authorized reseller and modifications to product may void the warranty; covers hardware, fans and internal power supplies - not software or external power supplies See <http://www.netgear.com/about/warranty/> for details. Lifetime technical support includes basic phone support for 90 days from purchase date and lifetime online chat support when purchased from a NETGEAR authorized reseller.

NETGEAR®

NETGEAR, the NETGEAR Logo, and ProSAFE are trademarks of NETGEAR, Inc. in the United States and/or other countries. Other brand names mentioned herein are for identification purposes only and may be trademarks of their respective holder(s). Information is subject to change without notice. © 2019 NETGEAR, Inc. All rights reserved.