

LUXUL

Simply Connected

Quick Install Guide

AGS-1024 24-Port Gigabit Switch



Use the AGS-1024 to:

- ▶ Add 24 Gigabit Ports to Your AV Rack Solutions
- ▶ Future Proof Your Network with Gigabit Speeds (10X Performance of Fast Ethernet)
- ▶ Set-up a Dedicated Network for Optimizing VoIP, Video, Security, or Gaming Applications

Quick Install Guide

Model Number: AGS-1024

24-Port Gigabit Switch

© 2015 Luxul. All Rights Reserved.

No part of this publication may be modified or adapted in any way, for any purposes without permission in writing from Luxul. The material in this manual is subject to change without notice. Luxul reserves the right to make changes to any product to improve reliability, function, or design. No license is granted, either expressly or by implication or otherwise under any Luxul intellectual property rights. An implied license only exists for equipment, circuits and subsystems contained in this or any Luxul product.

DOCUMENT CONVENTIONS

The following graphical alerts are used in this document to indicate notable situations:



NOTE: Tips, hints, or special requirements that you should take note of.



CAUTION: Care is required. Disregarding a caution can result in data loss or equipment malfunction.



WARNING! Indicates a condition or procedure that could result in personal injury or equipment damage.

FCC COMPLIANCE

This device complies with Part 15 of the FCC Rules. Operation is subject to the following two conditions: (1) this device may not cause harmful interference, and (2) this device must accept any interference received, including interference that may cause undesired operation.

CONTACT LUXUL

Sales

P: 801-822-5450

E: sales@luxul.com

Technical Support

P: 801-822-5450

E: support@luxul.com

PACKAGE CONTENTS

Please check the contents carefully after you open the packing:

- ▶ One AGS-1024 24-Port Gigabit switch
- ▶ Power Cord
- ▶ Rack Mount Brackets and Screws
- ▶ Four Rubber Foot Pads
- ▶ Quick Installation Guide

If any of the listed items are missing or damaged, please contact the reseller from whom you purchased the AGS-1024 for return/replacement.

HARDWARE DESCRIPTION

Front Panel

The front panel of the AGS-1024 Switch includes 24 (1 for each port) dual colored Link/Activity LEDs that can be switched from green to blue. In addition, the front panel has a single Power LED.



AGS-1024 Front Panel View

Rear Panel Layout

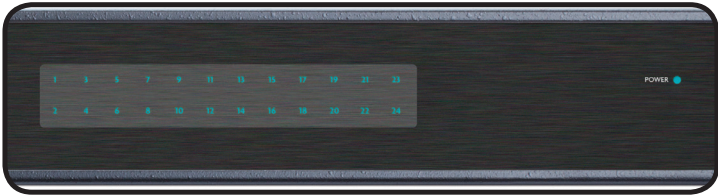
The rear panel of the AGS-1024 Switch includes 24 10/100/1000Mbps RJ45 ports. Each port has one Link/Activity LED.



AGS-1024 Rear Panel View

LED Indicators

The front panel LEDs of the AGS-1024 include 1 Power indicator and 24 numbered Link/Activity indicators. These LEDs show the operating status of the AGS-1024 and each switch connection.



LED Indicators

The following chart shows the LED indicators of the AGS-1024 along with an explanation of the indicator's properties:

LED	Status	Description
Front		
Power	On	This LED indicates that there is power to the AGS-1024.
	Off	If this indicator is not lit, please check the AC power cord to ensure proper connection to the outlet and the AGS-1024.
Link/Activity	On	Indicates a device is connected to the port of the AGS-1024.
	Flashing	The Link/Activity LED flashes when a port is receiving or transmitting data
	Off	Indicates the port is not connected to a device.
Back		
Speed/Link/Act	Green	The Link/Activity LED of the port will be on if there is a 1000Mbps device connected to the port
	Amber	The Link/Activity LED of the port will be on if there is a 10/100Mbps device connected to the port
	Flashing	The Link/Activity LED flashes when a port is receiving or transmitting data
	Off	There is nothing connected to the port



CAUTION: Please use the correct power cord for your environment. If any voltage other than 100/240 is applied, it will result in damage to the AGS-1024.

PREPARING FOR INSTALLATION

System Requirements

- ▶ **Network Connections:** Ethernet Enabled Computer
- ▶ **Web Browsers:** Internet Explorer 6.0 or higher, Mozilla 1.0 or higher, Safari 1.0 or higher
- ▶ **Internet:** Broadband Internet Service (depending on the service provider, a separate modem may be required)

Before Connecting to the Network

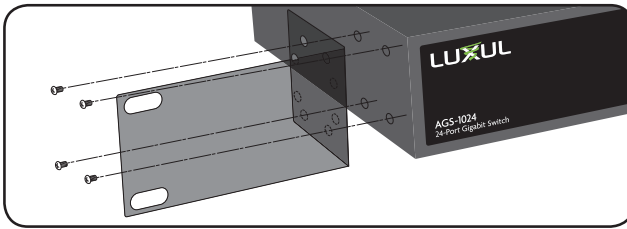
The AGS-1024 can be rack-mounted or used as a desktop switch. Before connecting to the network, please be aware of the following requirements:

- ▶ Install the AGS-1024 in a stable/safe place to avoid any possible damage
- ▶ Make sure there is adequate space around the AGS-1024 for adequate ventilation and proper heat dissipation.
- ▶ Do not place heavy articles on the AGS-1024.
- ▶ Power outlets should be within 5 feet of the AGS-1024.
- ▶ Check the power cord to confirm a secure connection.
- ▶ Ensure there is sufficient space around the AGS-1024 for proper ventilation and heat dissipation. It is recommended to have at least 4-6 inches around all sides.
- ▶ When installing the AGS-1024 on a surface, attach the rubber feet to the bottom of the device to avoid scratching the surface.

AGS-1024 INSTALLATION

Installing the AGS-1024 in a Rack

The AGS-1024 can easily be installed in a standard 19" rack. The AGS-1024 includes two mounting ears for installing and stabilizing the switch. When attaching the mounting ears and installing the switch within a rack, please refer to the following illustration:

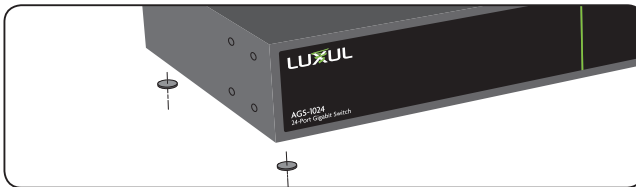


Rack-Mounting the AGS-1024

- ▶ Using the included screws, attach the mounting ears to each side of the switch.
- ▶ Mount the switch in the rack with the LEDs facing outwards. Be sure the switch is level and properly secured within the rack.

Desktop Setup

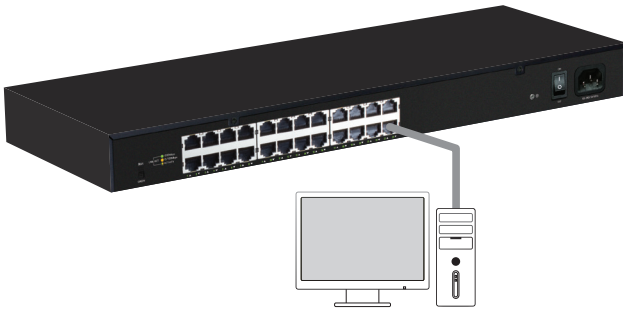
For use as a desktop device, position and apply the included rubber feet to the bottom of the AGS-1024.



Attaching the Rubber Feet to the AGS-1024

Connecting Devices

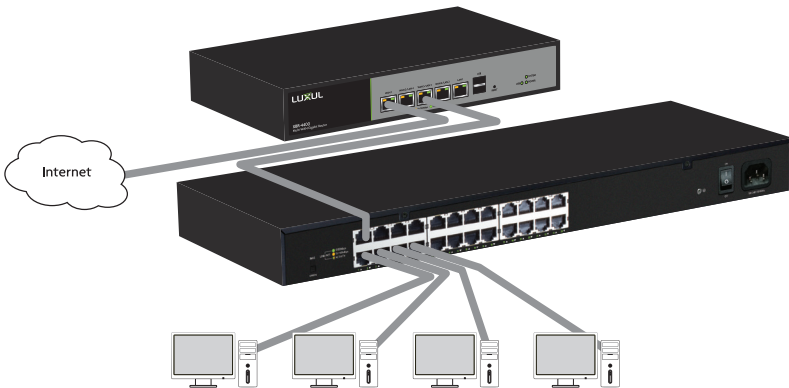
Use standard Ethernet CAT5, CAT5e, or CAT6 cable to connect the AGS-1024 to a device as described below (CAT6 must be used in order to achieve full Gigabit bandwidth). The AGS-1024 will automatically adjust to the characteristics (speed/duplex) of the device to which it is connected.



Connecting the AGS-1024 to a Device

When a device is properly connected, the Link/Activity LED for each port lights up. Please refer to the LED Indicators section for indicator definitions and troubleshooting.

Connecting to a Router or Other Switch



Connecting the AGS-1024 to Router or Switch

When a device is properly connected, the Link/Activity LED for each port lights up. Please refer to the LED Indicators section for indicator definitions and troubleshooting.

FCC Statement:

This equipment has been tested and found to comply with the limits for a Class A digital device, pursuant to part 15 of the FCC Rules. These limits are designed to provide reasonable protection against harmful interference when the equipment is operated in a commercial environment. This equipment generates, uses, and can radiate radio frequency energy and, if not installed and used in accordance with the instruction manual, may cause harmful interference to radio communications. Operation of this equipment in a residential area is likely to cause harmful interference in which case the user will be required to correct the interference at his own expense.

FCC Caution: Any changes or modifications not expressly approved by the party responsible for compliance could void the user's authority to operate this equipment.

This device complies with part 15 of the FCC Rules.



Hereby, Luxul, 14203 Minuteman Drive, Suite 201, Draper, Utah, 84020, declares that this Luxul AGS-1024 is in compliance with the essential requirements and other relevant provisions of Directive 1999/5/EC.

For a copy of this report send a self addressed stamped envelope to:
Luxul CE, 14203 Minuteman Drive, Suite 201, Draper, Utah, 84020.

Industry Canada

CAN ICES-3(A)/NMB-3(A)

Information on this document supersedes all previous versions. Products and documents subject to change without notice. Products may be discontinued without notice.